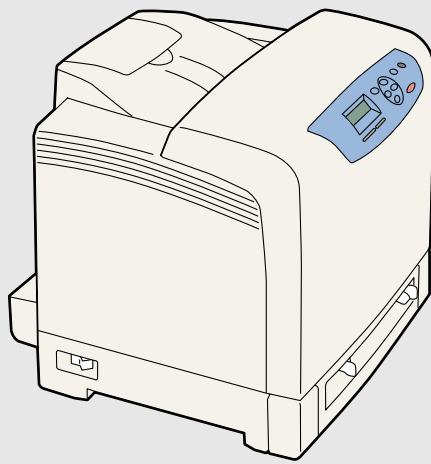


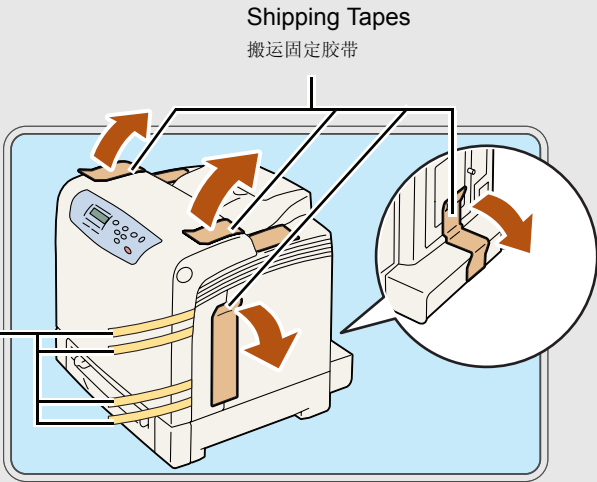
1 Check the Contents
检查包装内容

Printer
打印机



According to packing list
根据装箱清单检查

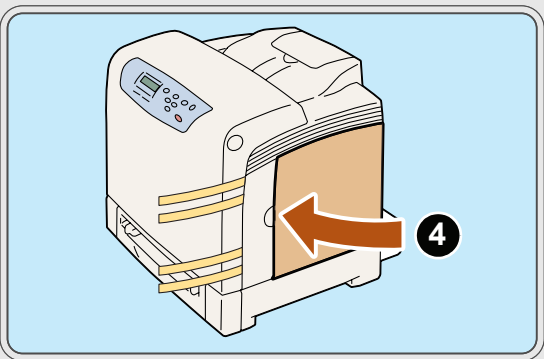
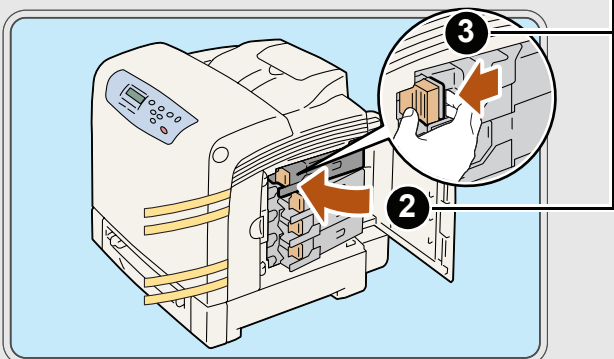
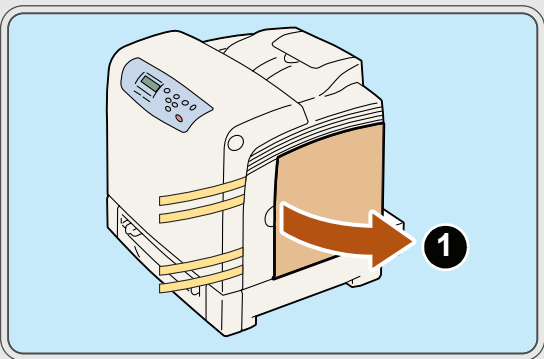
2 Remove the Shipping Tapes
拆除搬运固定胶带



Do not remove these tapes on this step.
这一步不要拆除胶带。

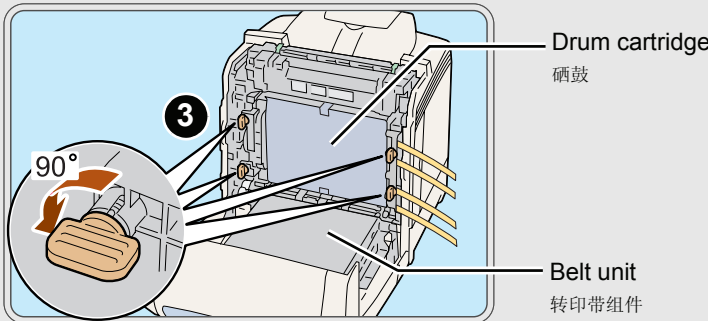
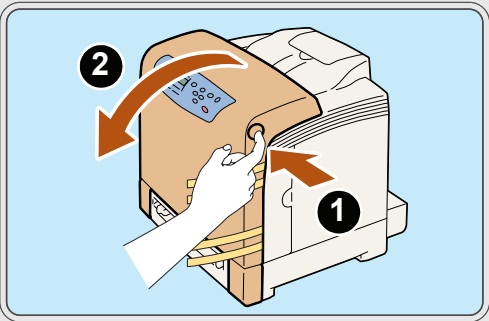
3 Set the Toner Cartridges
安装墨粉盒

Press and slide the orange latches of the four toner cartridges towards the front of the printer.
按下四个墨粉筒的橙色插销并向打印机前方滑动。



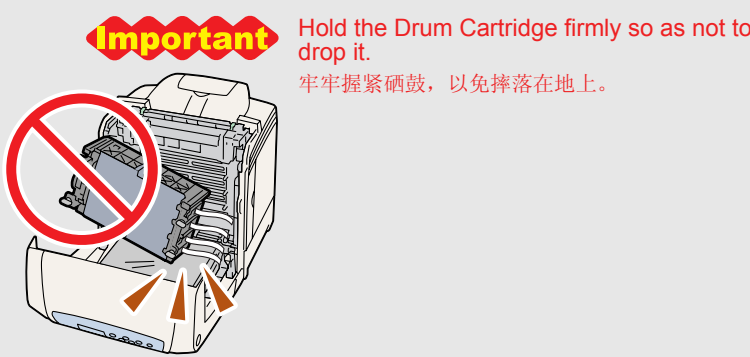
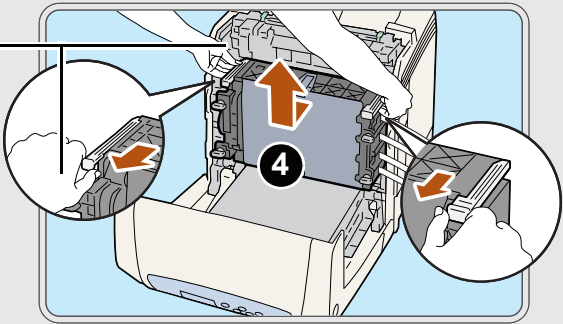
4 Set the Drum Cartridge
安装硒鼓

Remove the Drum Cartridge
拆除硒鼓



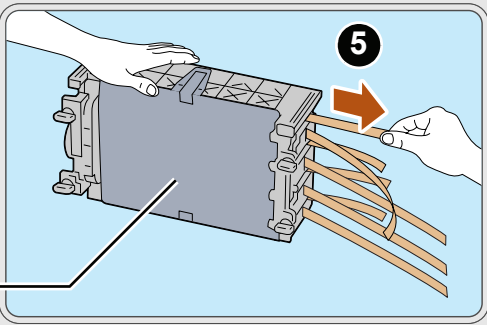
Important Do not force the lock levers past 90 degrees.
不要强行将锁杆转动 90 度以上。

Pull the cartridge frontward and out, securely holding the tabs on both sides.
向前拉出硒鼓，双手牢牢地握住两侧的突起。



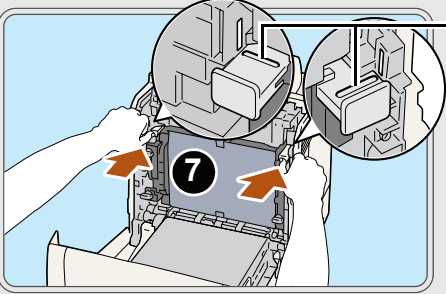
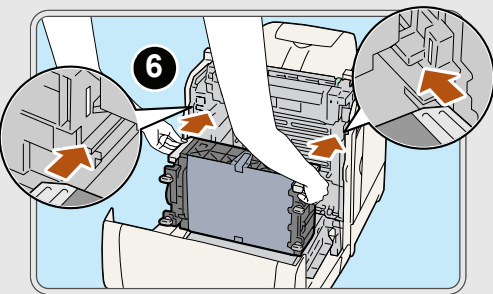
Important Hold the Drum Cartridge firmly so as not to drop it.
牢牢握紧硒鼓，以免摔落在地上。

Remove the 8 Pieces of Yellow Tapes
拆除 8 条黄色胶带

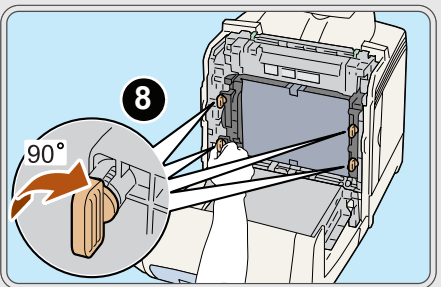


Do not remove the protective sheet in this step.
这一步不要拆除保护纸。

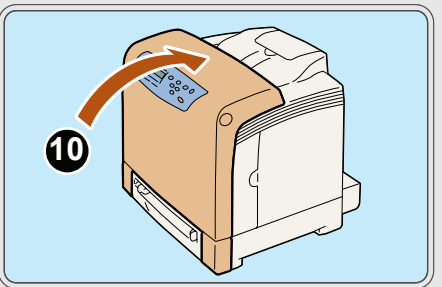
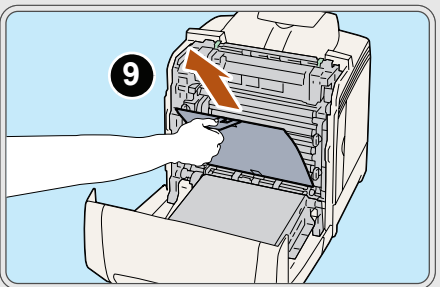
Insert the Drum Cartridge and Remove the Sheet
插入硒鼓并拆除保护纸



Insert the cartridge until the line on the gray tab meets the white line on the printer.
插入硒鼓，直到灰色突起上的指示线与打印机上的白线吻合。

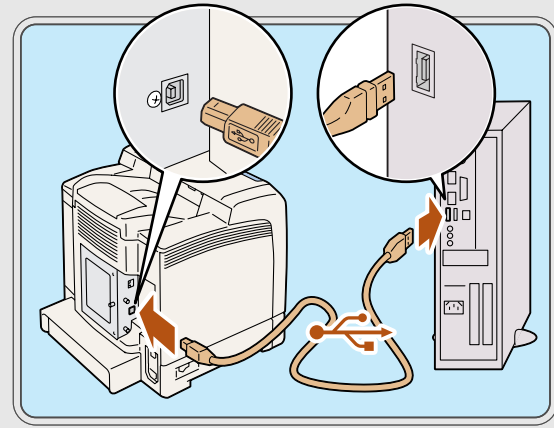


Important Do not force the lock levers past 90 degrees.
不要强行将锁杆转动 90 度以上。



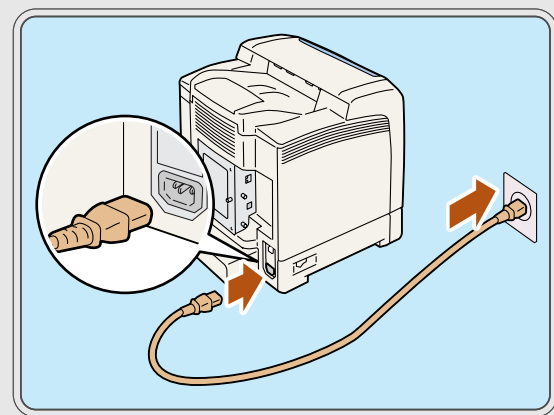
5

Connect the USB Cable 连接 USB 电缆



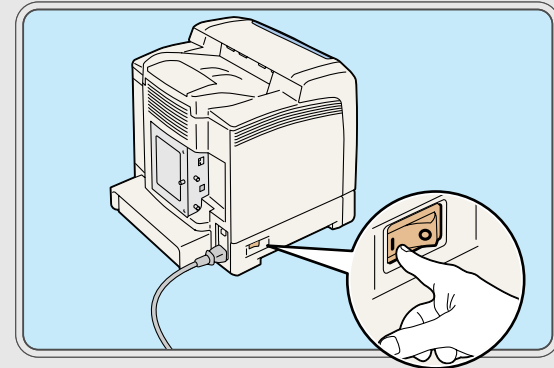
6

Connect the Power Cord 连接电缆



7

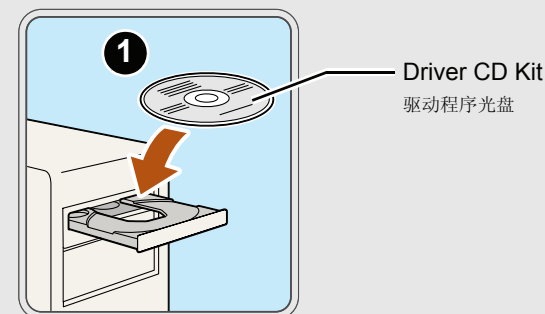
Switch On the Power 打开电源



8

Install the Print Driver 安装打印驱动程序

Note Before installation, please turn off the power of printer.
在安装驱动程序前, 请先关闭打印机电源。



3 Install the print driver following the on-screen instructions.
依照屏幕说明安装打印驱动程序。

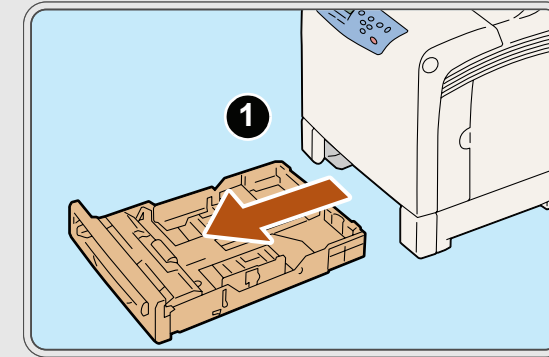
4 Set C8200N as default printer
设置 C8200N 为缺省打印机



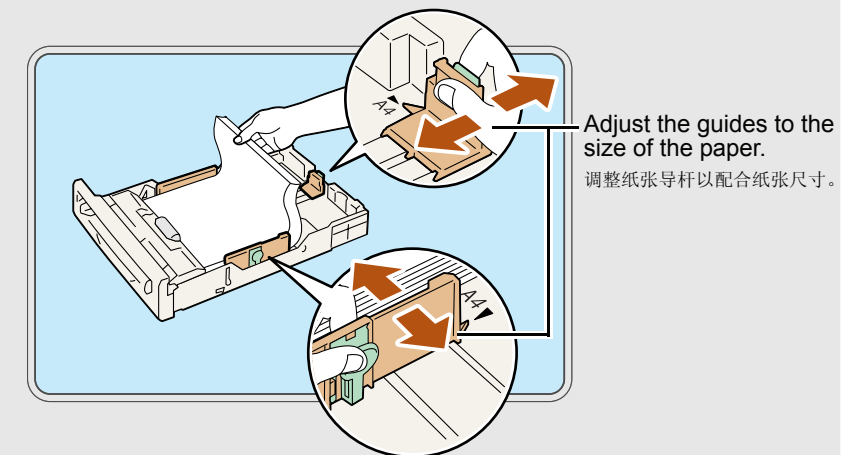
Note Strongly suggest to use static IP for network printer.
建议网络打印机使用固定 IP 地址。

9

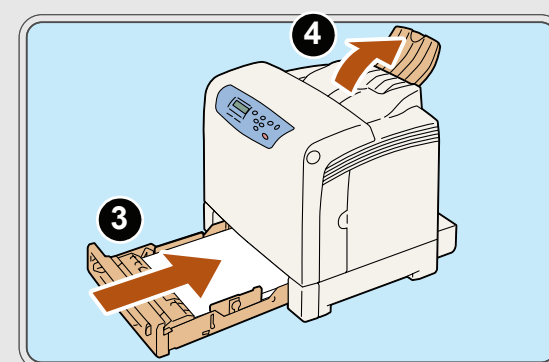
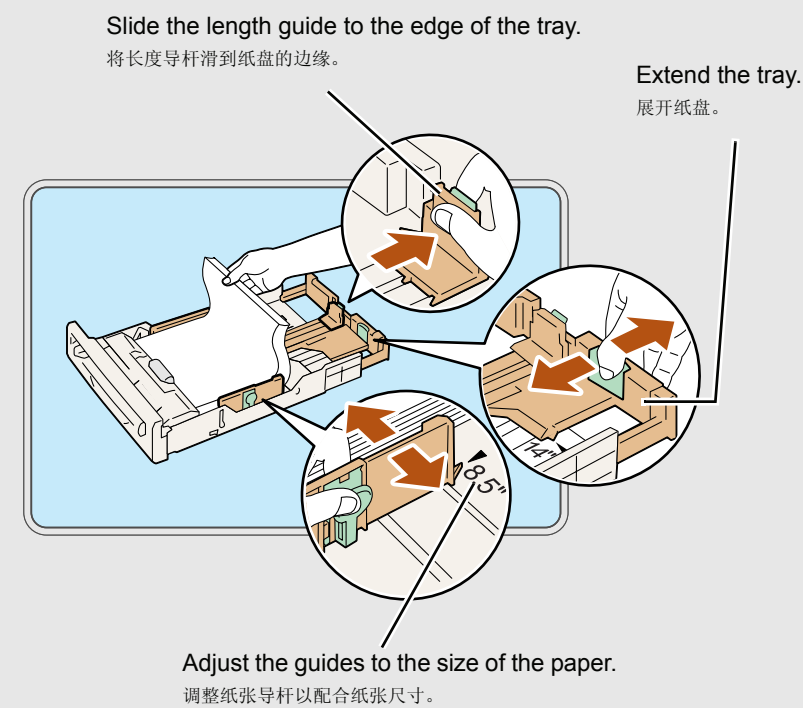
Load the Paper 放置纸张



2-a When loading A5/B5/A4/8.5 x 11"/7.25 x 10.5" paper
放置 A5/B5/A4/8.5 x 11"/7.25 x 10.5" 纸张时

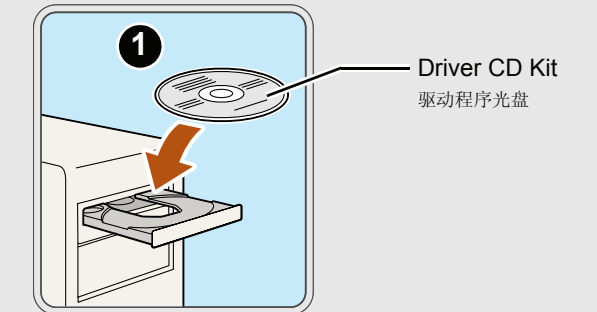


2-b When loading 8.5 x 13"/8.5 x 14" paper
放置 8.5 x 13"/8.5 x 14" 纸张时



10

View the User Guide (PDF) 查看使用说明书 (PDF)



Note To view the User Guide, You must have Adobe Reader installed on your computer.
要查看使用说明书, 必须在计算机上安装 Adobe Reader.
please download from Adobe.com
由于版权原因, 请自行从 Adobe.com 下载



3 Select your printer's User Guide following the on-screen instructions.
依照屏幕说明选择打印机的使用说明书。

Finish
完成